

ADR-3 Series, 3Watt
FEATURES:

- ✓ Universal AC input range
- ✓ Typical Efficiency up to 70%
- ✓ Short circuit, over current and over voltage protections
- ✓ Board in-line type installation
- ✓ High voltage isolation 4000Vac
- ✓ 100% burn-in test
- ✓ 3 year warranty

Model	Input voltage (Vac)	Output voltage (Vdc)	Output current (mA)	Efficiency Typ.
ADR3-3	85-264	3.3	909	69%
ADR3-5		5	600	69%
ADR3-9		9	333	70%
ADR3-12		12	250	70%
ADR3-15		15	200	70%
ADR3-24		24	125	70%

Note: You may request for the models without case, change the prefix "A" to "O", e.g. ODR3-3.

ELECTRICAL

Input						
Parameters	Symbols	Test Conditions / Comment	Min.	Typ.	Max.	Units
Input voltage	V_{in}	--	85	--	264	Vac
Input frequency	F_{line}	--	47	--	63	Hz
Input current	I_{in}	Full load, $V_{in}=115Vac$	--	74	--	mA
		Full load, $V_{in}=230Vac$	--	37	--	mA
Inrush current	I_{inrush}	Cold start, $V_{in}=230Vac$	--	40	--	A
Efficiency	η	Full voltage, full load	--	70	--	%
Output						
Output voltage accuracy	--	$V_{in}=100-240Vac$	--	1	--	%
Line regulation	$V_{out-line}$	V_{in} from 100Vac to 240Vac	--	0.5	--	%

ADR-3 Series, 3Watt
ELECTRICAL
Output

Parameters	Symbols	Test Conditions / Comment	Min.	Typ.	Max.	Units
Load regulation	$V_{out-load}$	20%-100% load	--	1	--	%
Set-up rise time	--	Full load, $V_{in}=230Vac$	--	25	--	ms
Hold-up time	--	Full load, $V_{in}=115Vac$	--	8	--	ms
		Full load, $V_{in}=230Vac$	--	40	--	ms
Ripple	V_{ripple}	--	--	60	--	mV

Protection

Overload	Typ.125-190%
Overvoltage	Typ.125-190%

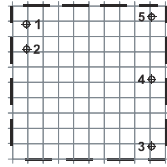
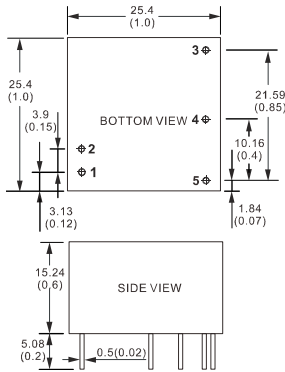
Environment

Storage	$T_{storage}$	Humidity: 5% RH to 95% RH	-40	--	+85	°C
Ambient operating temperature	T_a	Startup at rated voltage (Please refer to derating curve)	-25	--	+70	°C
Operating relative humidity	H_a	Non condensing	10	--	90	%
MTBF	T_{MTBF}	Full load, 230Vac input, 25°C ambient temperature	450	--	--	kHrs
Dimension(LxWxH)	25.4 x 25.4 x 15.24mm					

Safety

Safety standards	EN609501-1, EN60950-1
Withstand voltage	I/P-O/P: 4KVac
Insulation Resistance	I/P-O/P: > 100M Ohms/500VDC/25°C/70%RH
EMI / RFI conducted	EN55022, Level B conducted & radiated

Notes: Unless otherwise specified, all the above parameters are measured at ambient temperature of 25°C and input nominal voltage.

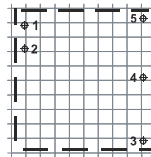
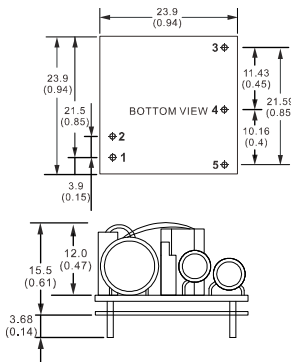
ADR-3 Series, 3Watt
MECHANICAL
ENCAPSULATED TYPE


Unit : mm(inch)
PCB vertical view
Grid spacing: 2.54mm(0.1inch)

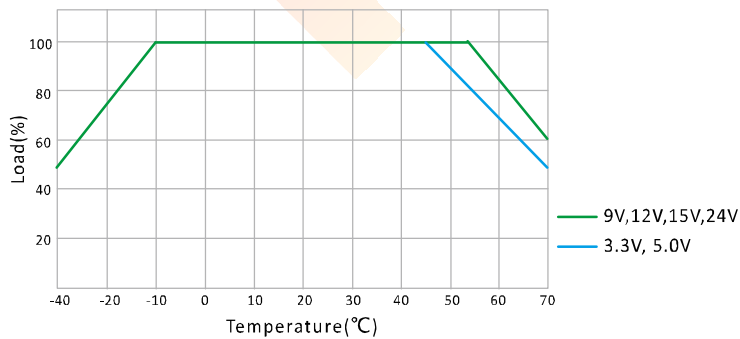
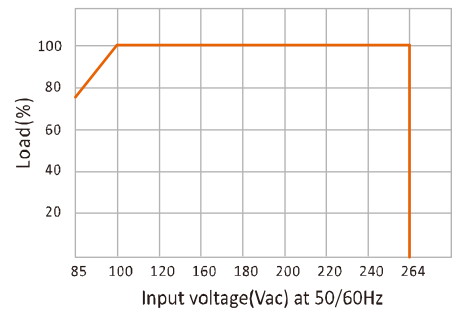
CONNECTION

PIN #	SINGLE
1	AC(N)
2	AC(L)
3	NC
4	-Vo
5	+Vo

Note: Unit is mm(inch).

OPEN TYPE


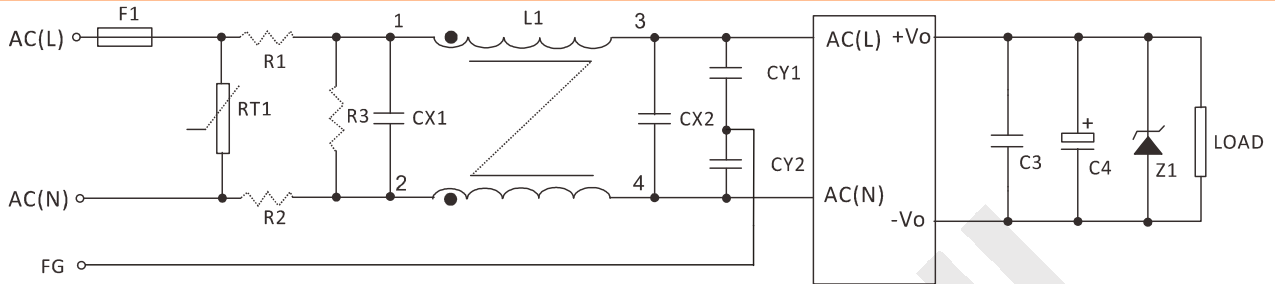
Unit : mm(inch)
PCB vertical view
Grid spacing: 2.54mm(0.1inch)

ELECTRICAL CURVE
DERATING CURVE

STATIC CHARACTERISTIC CURVE


ADR-3 Series, 3Watt

NOTE

RECOMMENDED TEST AND APPLICATION CIRCUIT



EMC RECOMMENDED APPLICATION CIRCUIT

	3.3VDC	5VDC	9VDC	12VDC	15VDC	24VDC
F1			T1A/250V			
RT1			7D471K			
R1, R2			2Ω/3W			
R3			1MΩ/2W			
L1			L=3-10mH, I=0.2-0.5A			
CX1, CX2			0.15-1μF/300Vac			
CY1, CY2			102K/400Vac			
C3			1μF/50V			
C4	470uF/16V	470uF/16V	150uF/25V	120uF/25V	120uF/25V	100uF/35V
Z1	P6KE6.8A	P6KE6.8A	P6KE16A	P6KE16A	P6KE20A	P6KE33A